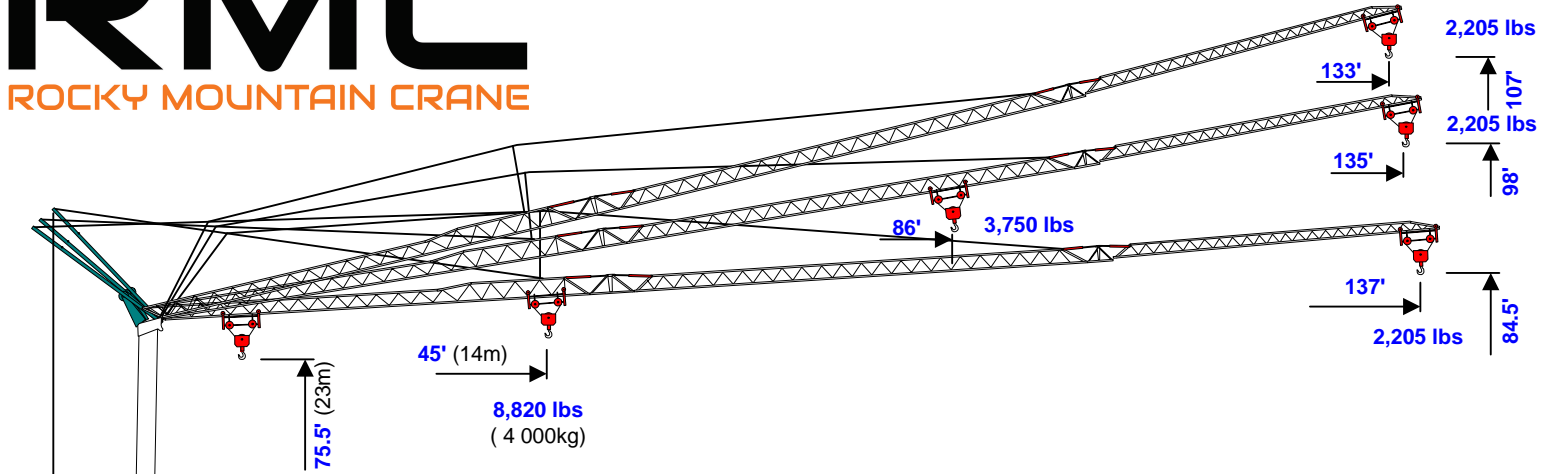


VICARIO

Self-Erecting Crane

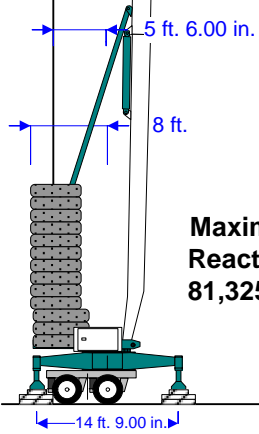
V 22137/85

(2,205 lbs, 137'/85')

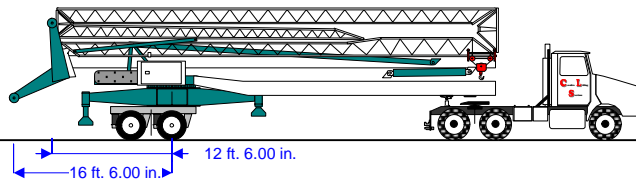


Power Requirements
Single Phase or Three Phase
240V or 460V

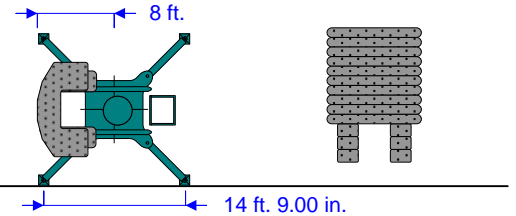
Hydraulic Outriggers



Maximum Reactions
81,325 lbs



Base Ballast X 6 2,975 lbs
Ballast Blocks X 10 4,300 lbs
Total Ballast: 60,860 lbs
Crane Weight: 39,250 lbs
Total Erected Weight: 100,110 lbs



| | Hook | Ft. | 43 | 46 | 52 | 59 | 66 | 72 | 79 | 85 | 92 | 98 | 105 | 112 | 118 | 125 | 131 | 137 |
|--------|--------|--------|-------|-------|-------|-------|-------|-------|-------|-------|-------|-------|-------|-------|-------|-------|-------|-------|
| | Radius | Meters | 13.1 | 14 | 16 | 18 | 20 | 22 | 24 | 26 | 28 | 30 | 32 | 34 | 36 | 38 | 40 | 41.8 |
| 2 Part | 138' | Lbs | 8,820 | 8,103 | 6,900 | 5,997 | 5,293 | 4,730 | 4,268 | 3,882 | 3,556 | 3,277 | 3,034 | 2,822 | 2,635 | 2,467 | 2,317 | 2,205 |
| Block | 42m | KG | 4,000 | 3,675 | 3,129 | 2,720 | 2,401 | 2,145 | 1,936 | 1,761 | 1,613 | 1,486 | 1,376 | 1,280 | 1,195 | 1,119 | 1,051 | 1,000 |